

# TFL 44 Management Plan #6

## Timber Supply Information Package Overview

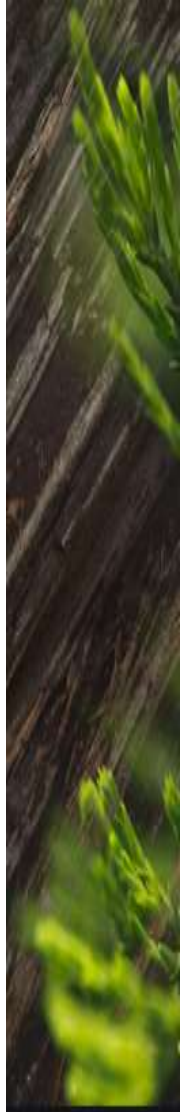
For West Island Woodlands Advisory Group



Ye Huang, RPF  
Timber Supply Forester  
June 2021

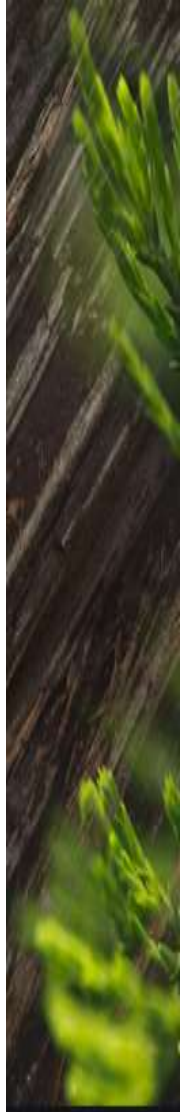
# Outline

- Definition and Legislation Framework
- Roles of the Information Package
- TFL 44 Information Package Review
  - Factors influencing timber supply
  - Timber Harvesting Land Base definition
  - Current Forest Conditions
- What's next?



# Definition and Legislation Framework

- Timber supply: the amount of timber that is projected to be available for harvesting within a specified time period, under a particular management regime.
- Allowable Annual Cut (AAC): the maximum rate of timber harvest determined for an area under *Section 8 of the Forest Act*, specified as a volume (m<sup>3</sup>) of timber per year. Current AAC for TFL 44: 782,482 m<sup>3</sup>/yr.
- TFL Licensee require to submit a management plan to the BC Chief Forester for AAC Determination under *Section 35 of the Forest Act*.

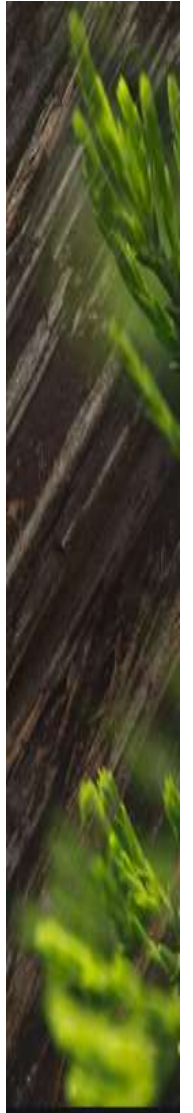


# Roles of the Information Package (IP)

- IP summarizes data and assumptions for timber supply analysis.
  - Forest estate inventory; expected timber growth rates
  - Non-timber values & objectives (e.g. Wildlife/Riparian management)
  - Current forest management practices (e.g. retention silviculture system according to WFP's Stewardship and Conservation Plan)
- To be reviewed by the Province and will be made available to First Nations and the public for review and comment (including WIWAG).

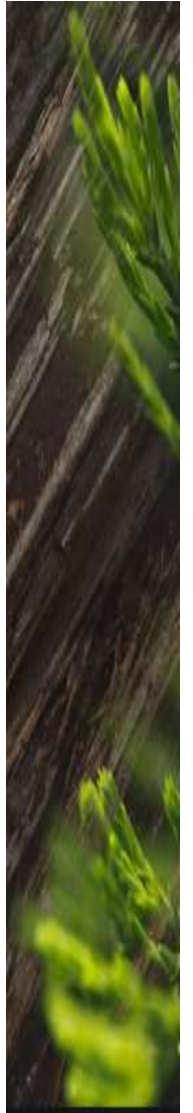
# What Influences Timber Supply?

1. How much land you have to manage
2. The age class distribution of the forest
3. What constraints there are on the land you have to manage
4. How fast the trees grow (to a big enough size for future harvest)



# Land Base Category Definitions

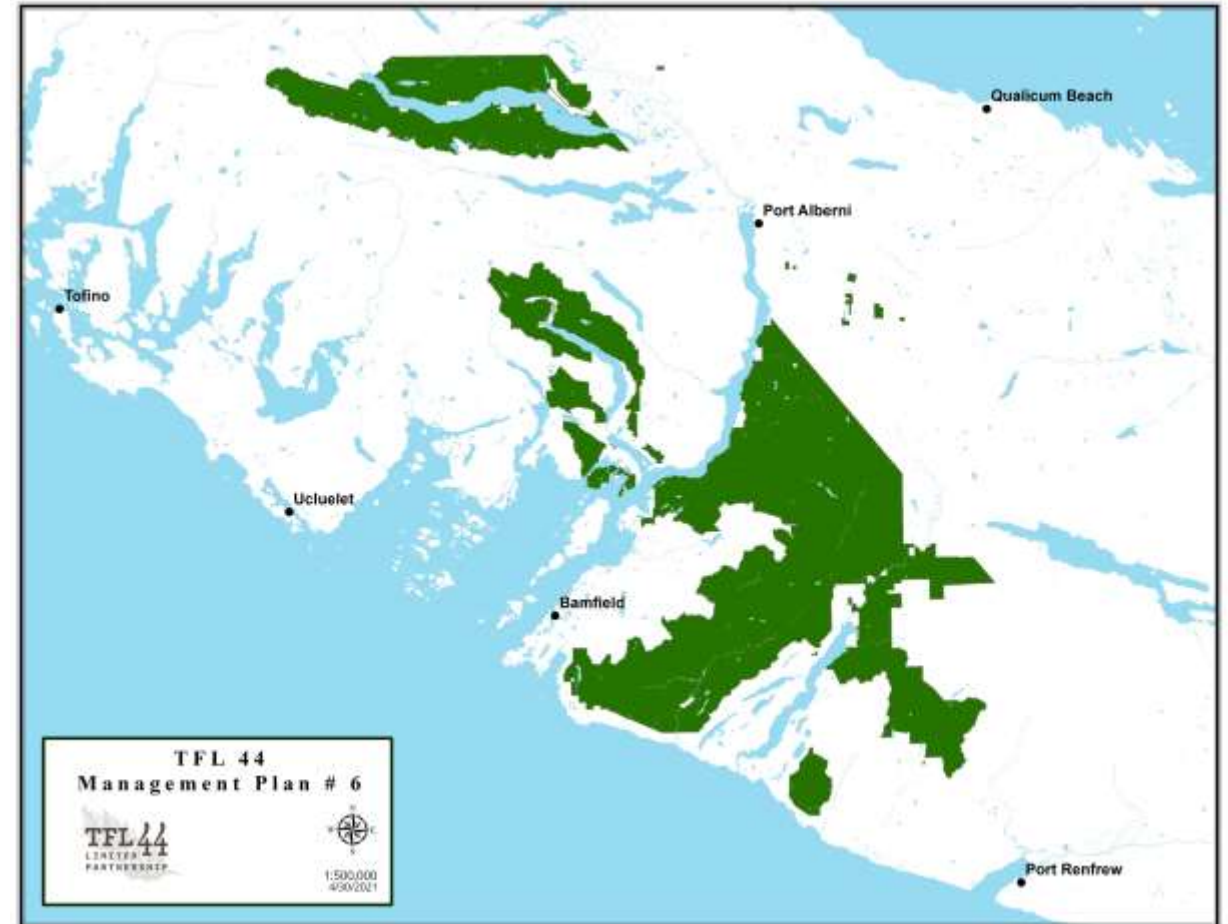
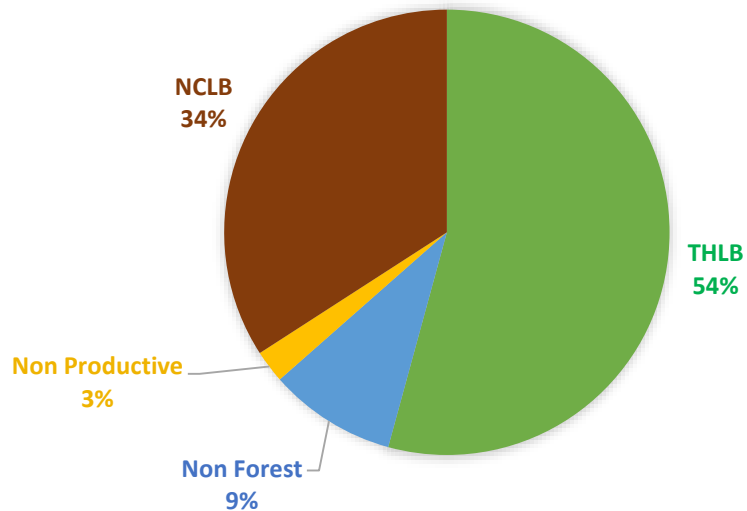
- **Total Area** = total area within TFL 44
- **Forested Area** = area within TFL 44 capable of growing trees
- **Productive Forest Area** = area within TFL 44 capable of growing trees large enough to harvest
- **Operable Area** = productive forest area within TFL 44 physically and economically accessible
- **Timber Harvesting Land Base (THLB)** = operable area actually available for harvest given objectives for all forest values
- **Non-contributing Land Base (NCLB)** = productive forest area within TFL 44 that does not contribute to timber supply, but contributes to non-timber values (e.g. wildlife habitats, riparian reserves, archaeological sites etc.)



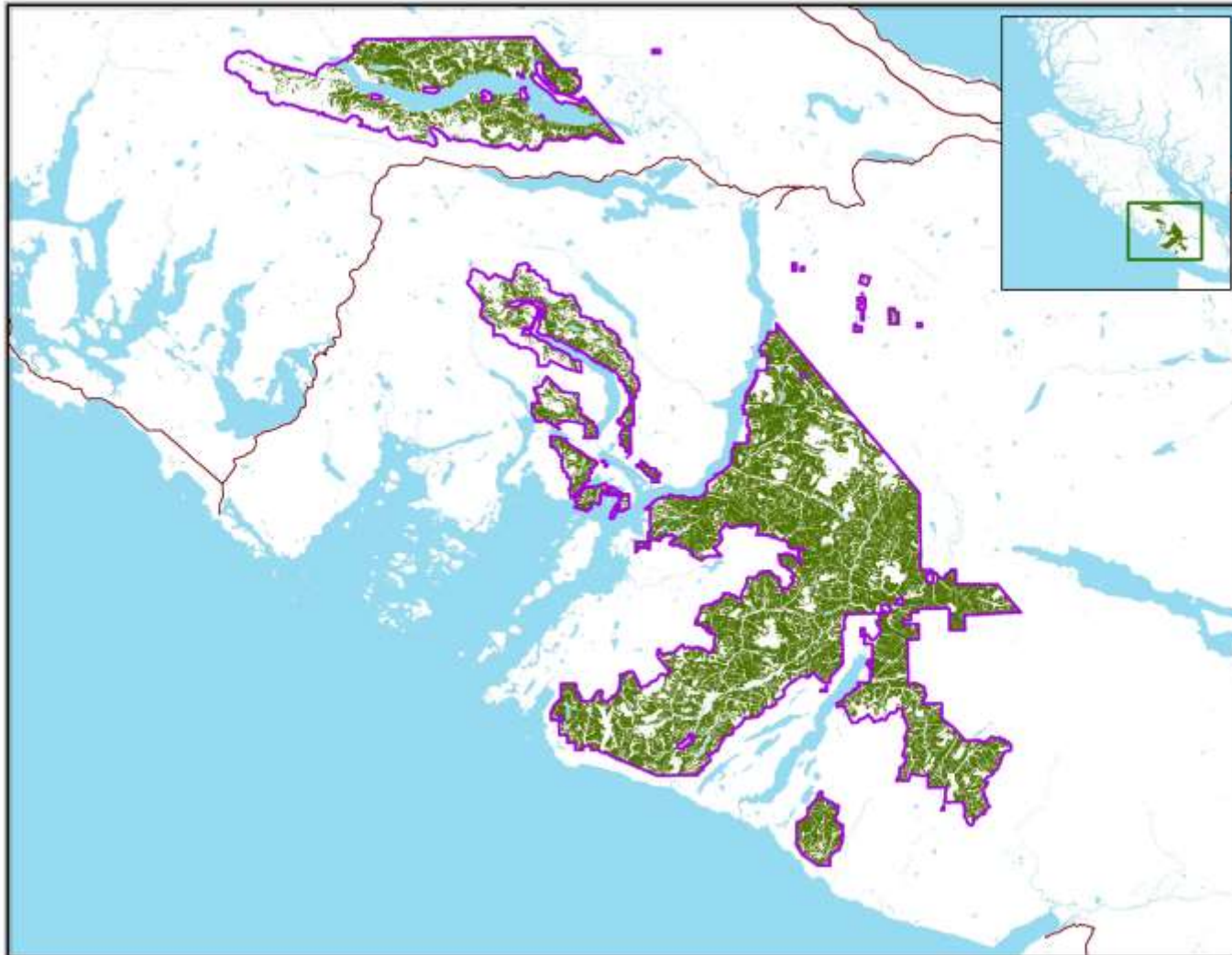


# TFL 44 Area Summary

- 136,900 ha Total
- 124,200 ha Forested
- 120,900 ha Productive Forest
- 98,300 ha Operable Forest
- 74,260 ha Timber Harvesting Land Base

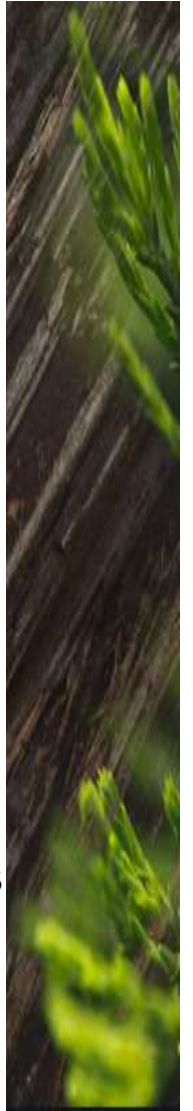


# TFL 44



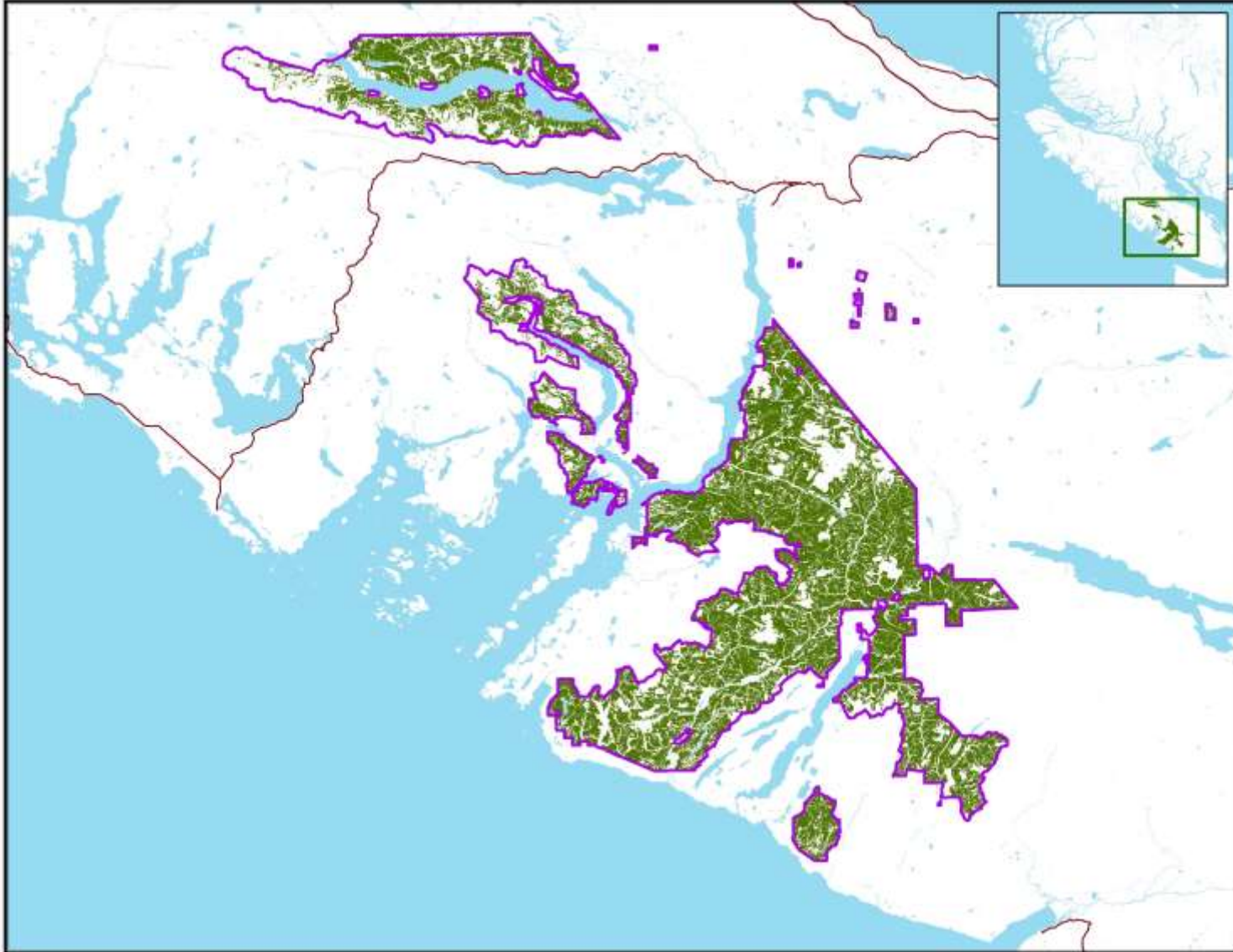
- Non-forest
- Roads & powerlines
- Non-productive
- Low productivity
- Inoperable
- Riparian
- Ungulate Winter Range
- OG Management Area
- Wildlife Habitat Area
- Uneconomic\*
- Deciduous
- Recreation
- Archaeological Sites
- Existing Stand Reserves
- Unstable Terrain
- THLB

\*Uneconomic THLB netdown is different than Uneconomic Partition

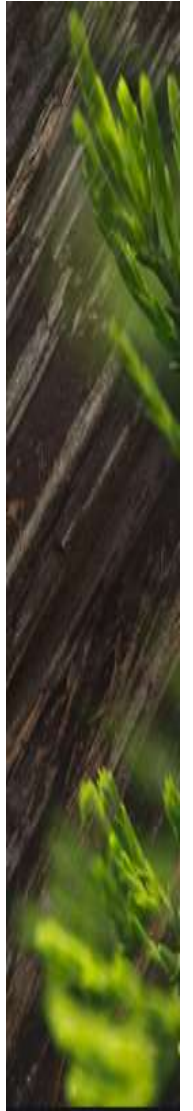
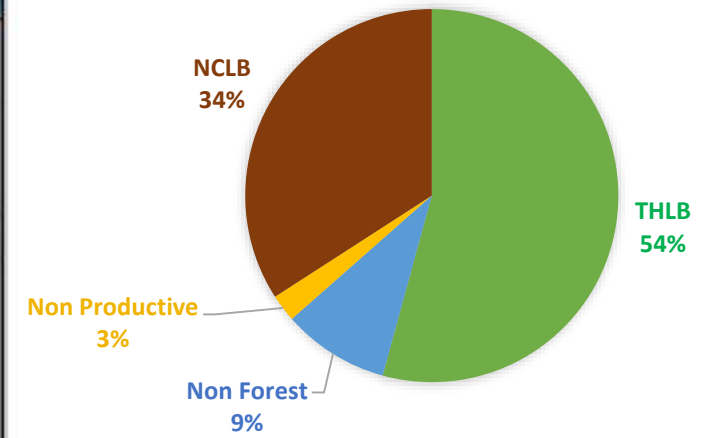




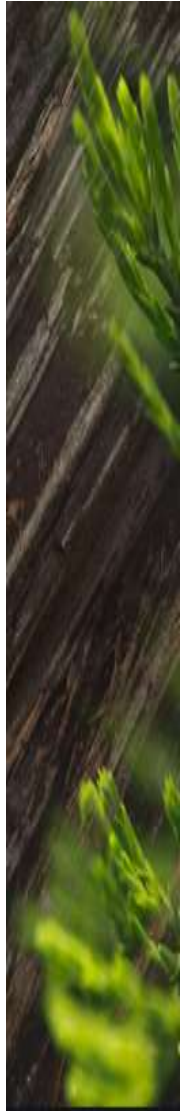
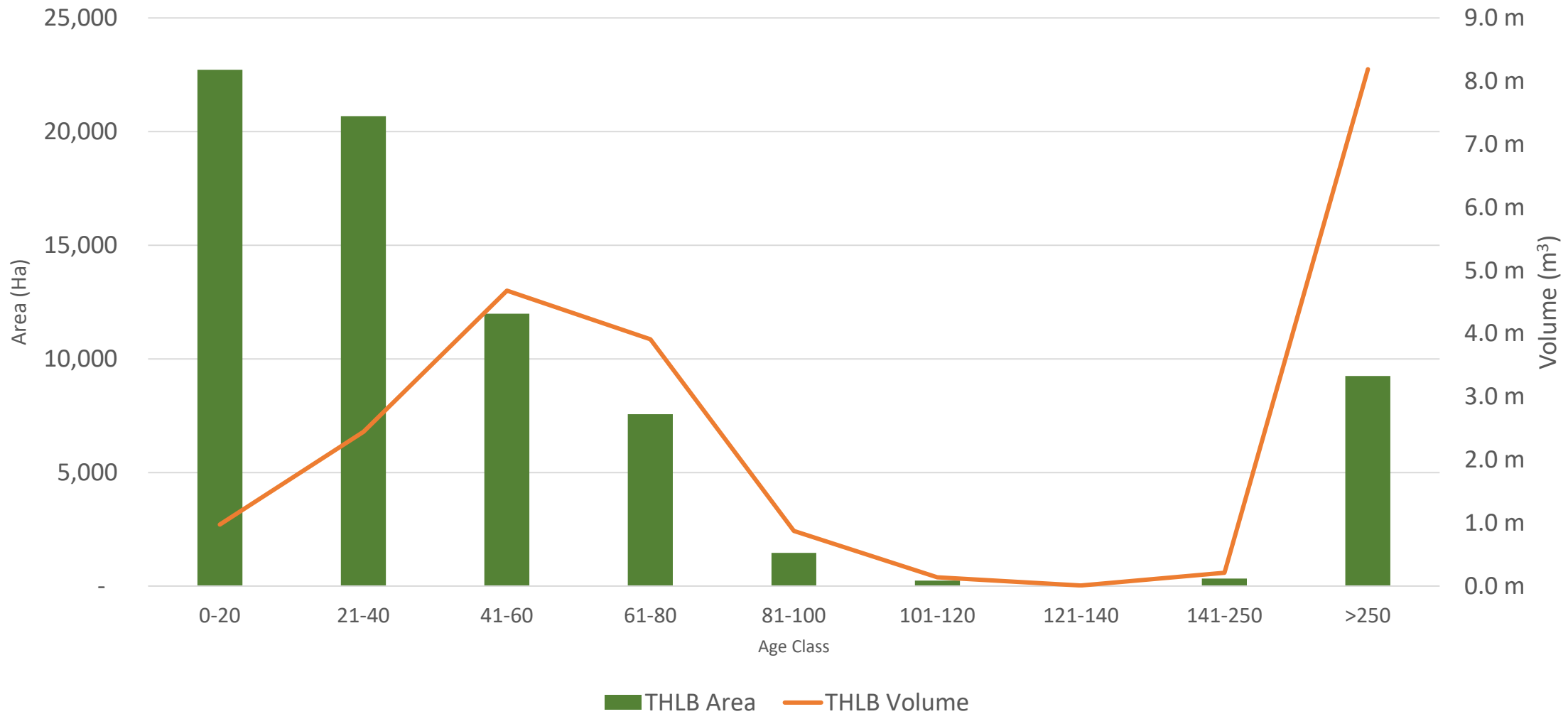
# TFL 44



### TFL 44 BY AREA

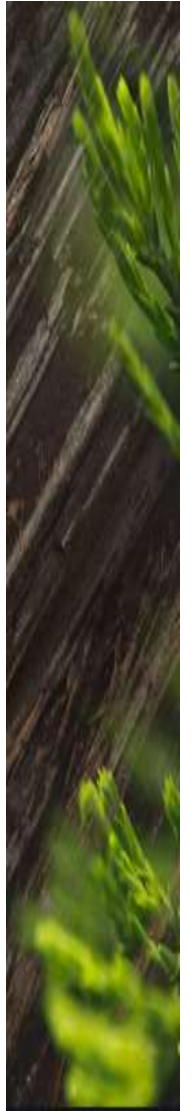
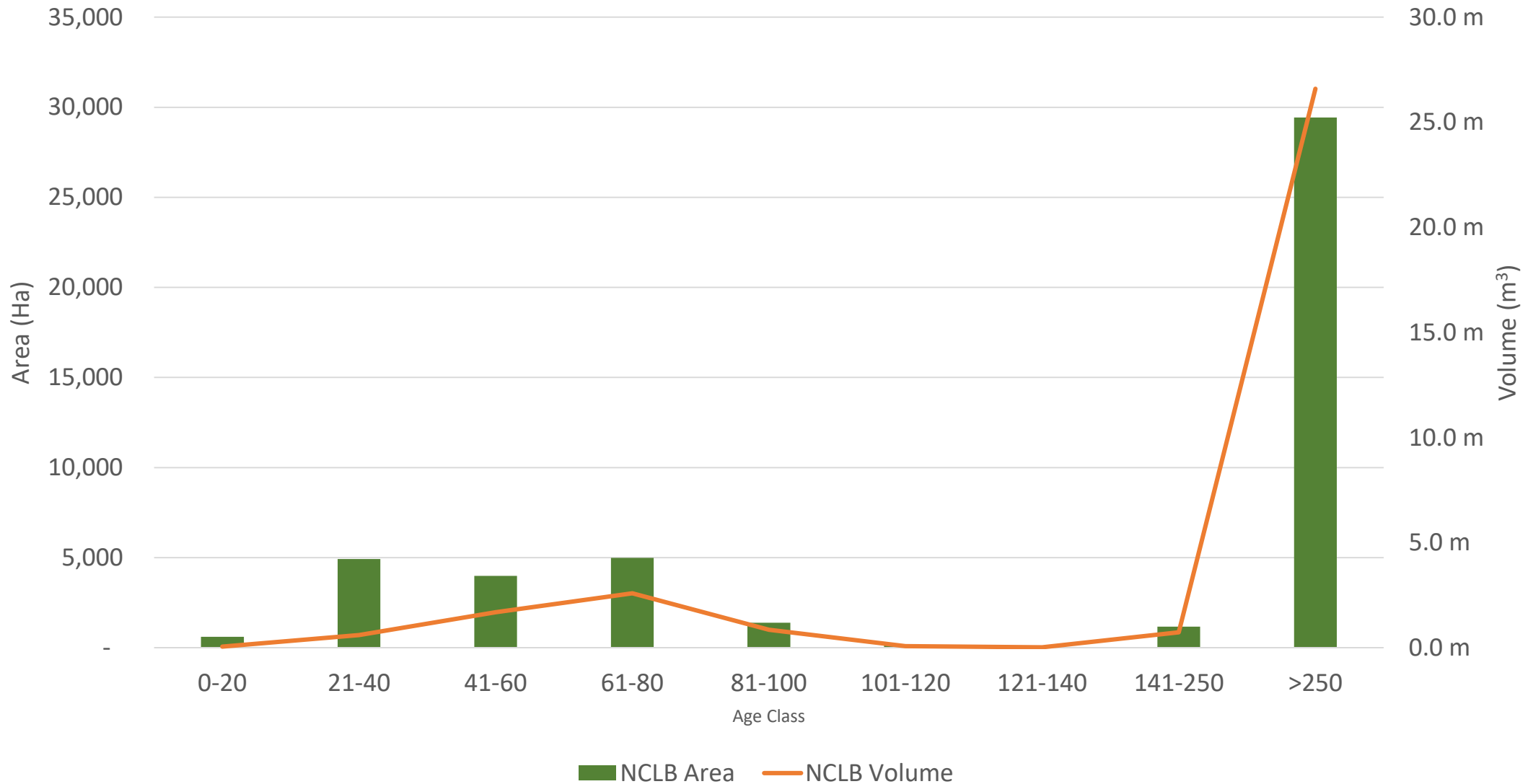


# Current Forest Conditions - by Area and Volume



Forests contributing to harvest

# Current Forest Conditions - by Area and Volume

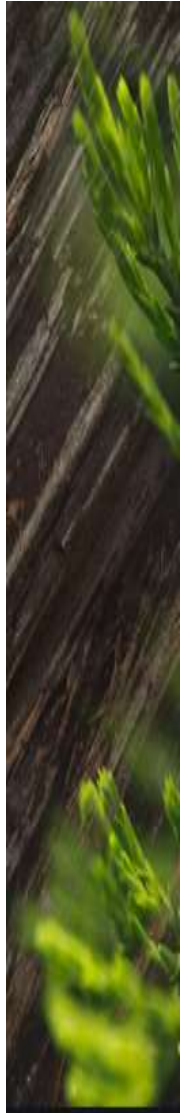


Forests contributing to non-timber values

# What's next? - Timber Supply Review Process

1. WFP submits draft TSA Information Package (IP)
  - a) IP summarizes data and assumptions for timber supply analysis
  - b) Agency / Public review (including WIWAG)
  - c) FN consultation / information-sharing
2. IP accepted
3. Timber Supply analysis (TSA)
  - a) "Base Case"
  - b) Sensitivity Analyses
4. Draft MP & TSA review, consultation, information-sharing (including WIWAG)
5. TSA Accepted
6. Proposed MP submitted
7. AAC determined and MP approved

**Generally 12-24 month process**

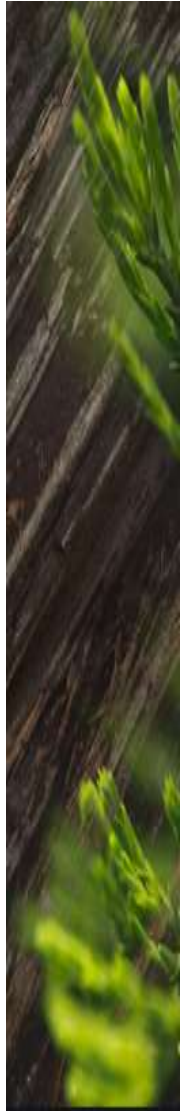


# What's next? - Timber Supply Review Process

Currently here

1. WFP submits draft TSA Information Package (IP)
  - a) IP summarizes data and assumptions for timber supply analysis
  - b) Agency / Public review (including WIWAG)
  - c) FN consultation / information-sharing
2. IP accepted
3. Timber Supply analysis (TSA)
  - a) "Base Case"
  - b) Sensitivity Analyses
4. Draft MP & TSA review, consultation, information-sharing (including WIWAG)
5. TSA Accepted
6. Proposed MP submitted
7. AAC determined and MP approved

Generally 12-24 month process





# QUESTIONS



Western Forest Products, Inc.  
SPECIALTY LUMBER PRODUCTS



Huntaway

PROTECTIVE SERVICES